

Tâsilhqot'in Impact Assessment: Cumulative Social Effects & Nenqay detel?aš

Jan. 31, 2022

Dr. Lauren Arnold

lmarnold@mail.ubc.ca



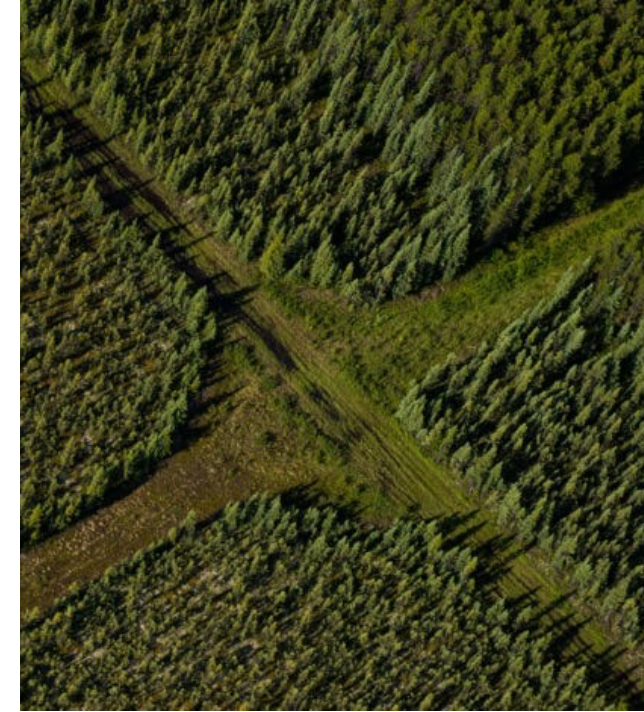
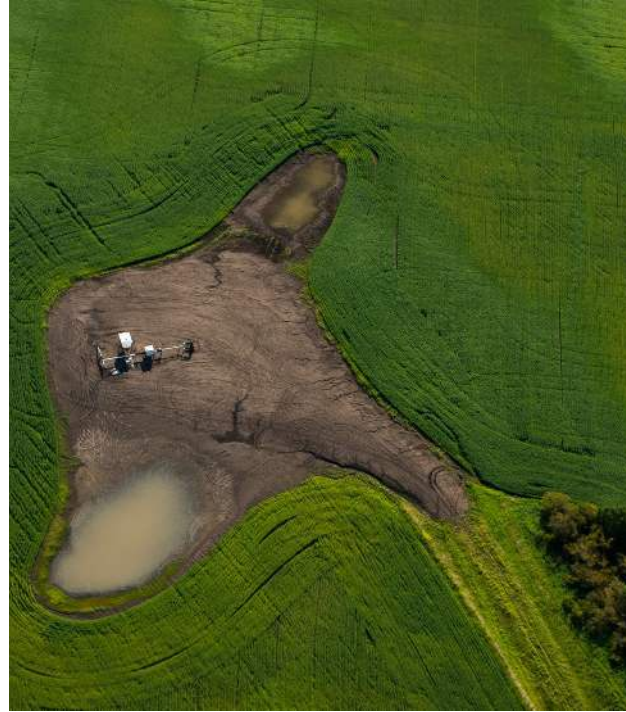
T̂silhqot'in Impact Assessment Framework

April 2021 – March 2023: Development of the T̂silhqot'in Impact Assessment Framework

- Understanding Cumulative Social Effects
 - Developing an approach assessing cumulative effects that is practical, and aligned with the objectives of the T̂silhqot'in Nation
 - Identify lessons and best practices that could help other governments and Nations

What is Impact Assessment (IA)?

- A process to evaluate potential resource development projects and their impacts, and to make decisions about if the project should be allowed to happen, and how it should happen
- **T̓silhqot'in IA Framework**
 - When should an assessment happen?
 - What should it include?
 - Clarifies the Nation's expectations for potential proponents (individuals or companies who propose projects), and for British Columbia (BC) and Canada
 - Outlines decision-making criteria for consenting to projects



What are Cumulative Effects?

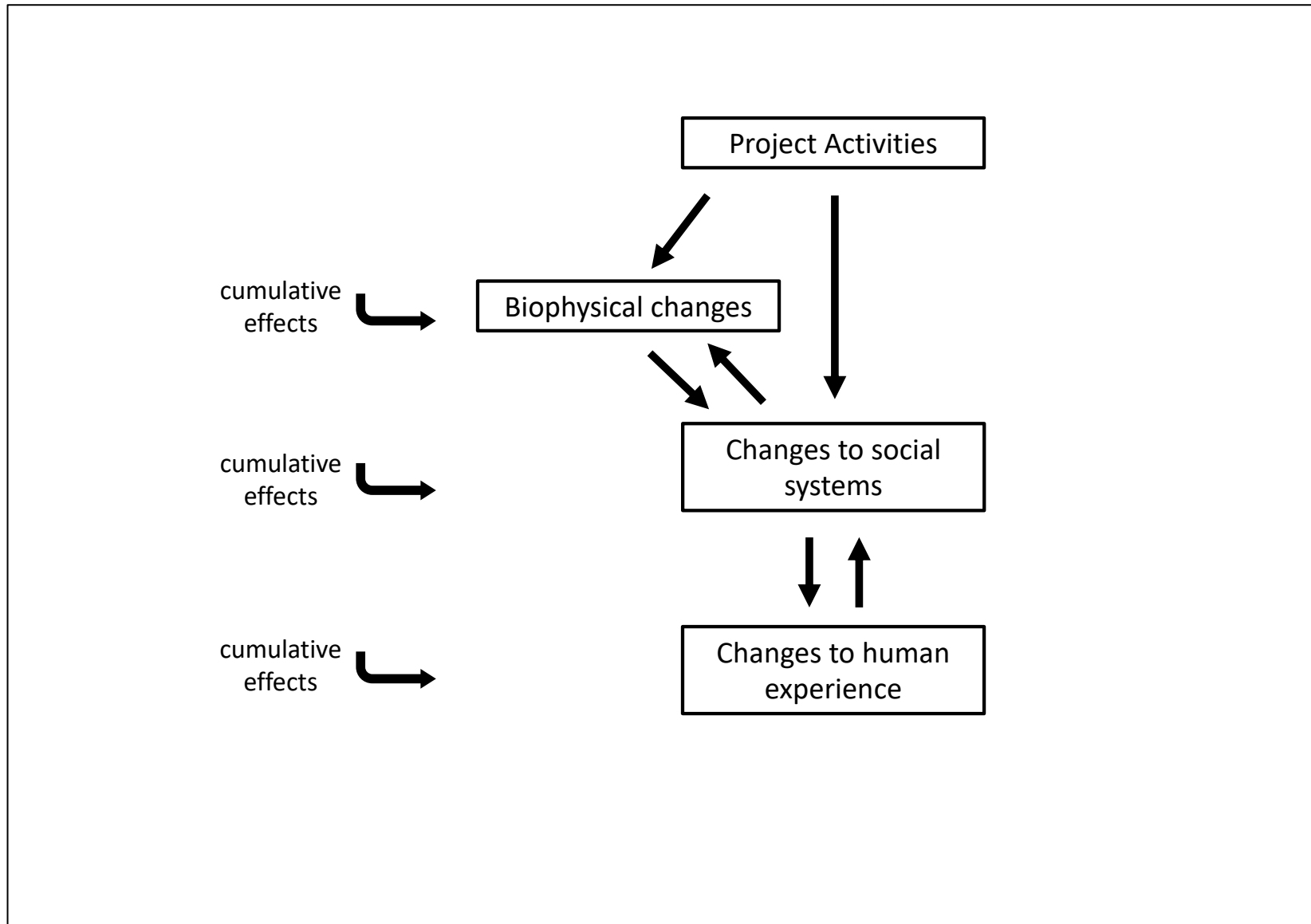
Cumulative Effects

- Changes to environmental, social, cultural, spiritual, health, and economic values caused by the accumulation and interaction of impacts from past, present, and potential future human activities and natural processes
- Cumulative Effects Assessment (CEA)
- **Nenqay detel?aš**
 - “the world is stepping into a change”
 - how nexwenen (nen) changes and impacts cultural security

What are social impacts?

- Changes to:
 - Peoples' way of life
 - Their culture
 - Their community
 - Their political systems
 - Their environment
 - Their health and wellbeing
 - Their personal and property rights
 - Their fears and aspirations

Cumulative Social Impacts



Assessing Cumulative Effects under T̂silhqot'in IA



T̂silhqot'in Approach to Cumulative Effects

- The T̂silhqot'in Nation understands that assessing cumulative effects is inseparable from IA and nen planning (land-use planning).
- CEA functions to achieve the Nation's vision and priorities for the territory.
- The IA Framework
 - **Values**
 - **Guiding Principles**
 - **Decision-making Criteria – Requirements for Consent**
 - **IA Process**

- Understanding cumulative effects & nenqay detel?as is a guiding principle for Tsilhqot'in IA.

8. Assessing the impacts of a proposed project and the effectiveness of proposed mitigation measures requires understanding *cumulative effects* and *nenqay detel?as*

Relationships between deni and the nen

“you have got to have healthy communities and healthy families in order to protect the land”

Decision-making criteria: The project will not harm or create a real risk of harm to the health of Tâilhqot'in *nen*...

Decision-making criteria: The project will not harm or create a real risk of harm to the Tâilhqot'in, including our future generations....

Explaining: “the project will not harm or create a real risk of harm to the T̂silhqot’in”

- a. undermine our *cultural security*,
- b. undermine our *food security*,
- c. harm a sacred place or otherwise undermine our spirituality or contravene our spiritual beliefs,
- d. undermine our ability to practice our land-based rights and responsibilities,
- e. undermine our current economic development activities or conflict with our economic development plans,
- f. undermine our self-determination,
- g. jeopardize the mental and physical health, and safety of our community members,
- h. create scarcity or drive up prices of essential goods and services (e.g. groceries, housing, health care services, etc.), and/or
- i. subject any T̂silhqot’in to harassment, racism, or violence, including sexual violence.

The assessment takes into account *cumulative effects* and *nenqay detel?as*, proposed mitigation measures for potential negative impacts, and includes plans for monitoring, compliance and enforcement, and *adaptive management*.



Understanding and respect for history

- There are many areas within the territory that have already been impacted by development pressures, that are home to sensitive species, and/or are important cultural, spiritual, and recreation areas.
- *“our ancestors DNA is embedded in the land”*

UBC Landscape Ecology Lab

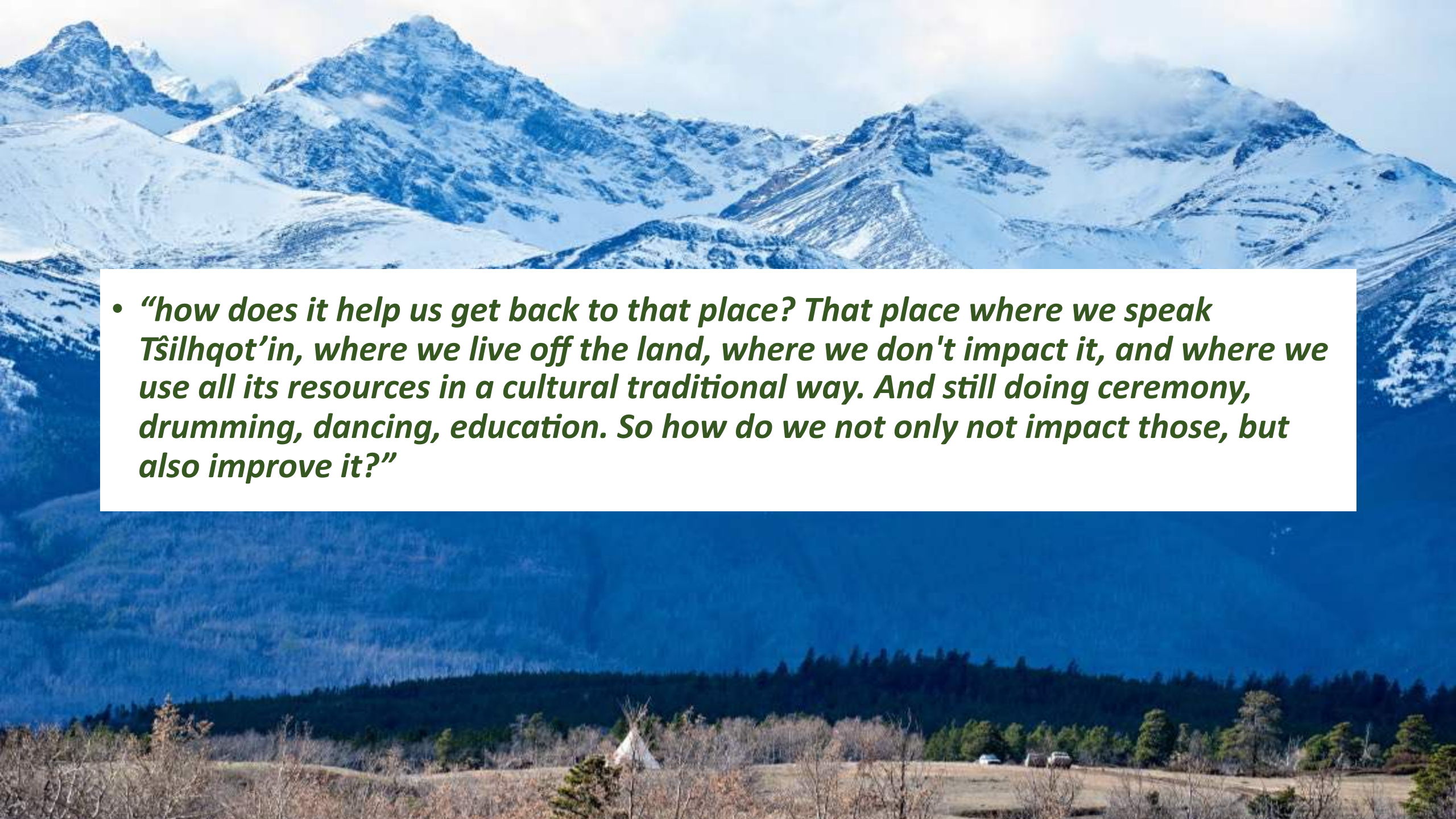


Looking to the future

Decision-making criteria: The project aligns with Tâilhqot'in Nation's values and advances the Tâilhqot'in Nation's visions and priorities for stewarding Tâilhqot'in *nen* and caring for the Tâilhqot'in.

➤ This criterion will be assessed by considering our Tâilhqot'in *dechen ts'edilhtan, nen* plans, policies, and views of the Tâilhqot'in Nation.

• ***“Ideally, the nation would have the social health plan, economic plan, and land use plan. And if the proponent wanted to come in, they must understand all of those, and how they see themselves fitting into it.”***

- 
- *“how does it help us get back to that place? That place where we speak T̄silhqot’in, where we live off the land, where we don't impact it, and where we use all its resources in a cultural traditional way. And still doing ceremony, drumming, dancing, education. So how do we not only not impact those, but also improve it?”*

T̂silhqot'in Impact Assessment: Cumulative Social Effects & Nenqay detel?aš

Jan. 31, 2022

Dr. Lauren Arnold

lmarnold@mail.ubc.ca



What **social impacts or values** are important to consider during an IA (what social impacts or values are you concerned about)?

-

What **methods** could be used to assess impacts to these social values?

-

Where could we look for **information** on how these values are affected? How could we better understand these impacts?

-

- What do you consider as **signs or indicators** of Tâilhqot'in wellbeing/quality of life?
- What do you consider as **signs or indicators** for Tâilhqot'in cultural security?

- How would we know if Tâsilhqot'in wellbeing/quality of life/culture is **improving** (i.e. what signs or indicators could we look for)?
- What should the **goals** be for improving Tâsilhqot'in wellbeing/quality of life and strengthening Tâsilhqot'in culture?

- What types of things affect the **relationship** deni has with the nen?
- What types of things help deni to have a good relationship with the nen and care for it?
- What types of things prevent or make it harder for deni to have a good relationship with the nen?